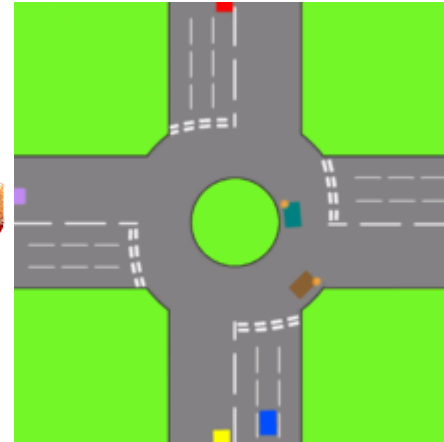
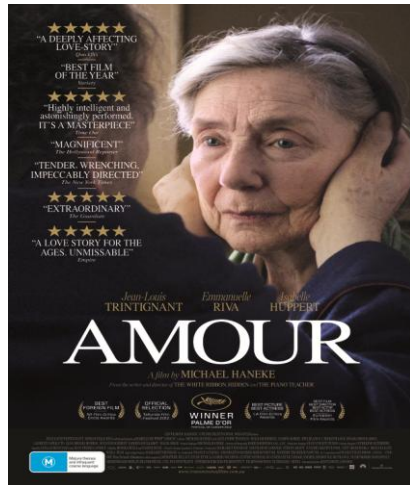


## VOCABULAIRE EN IMAGES



CARREFOUR

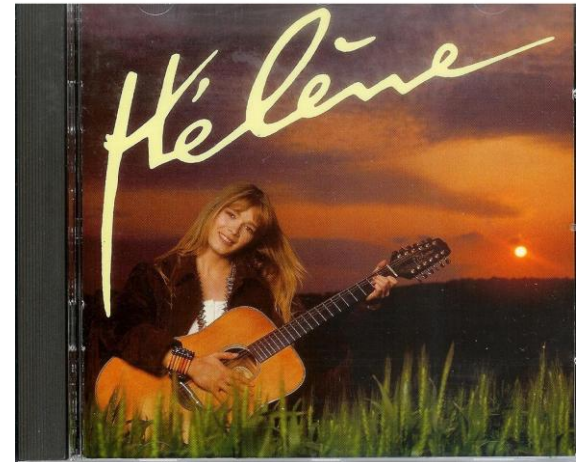
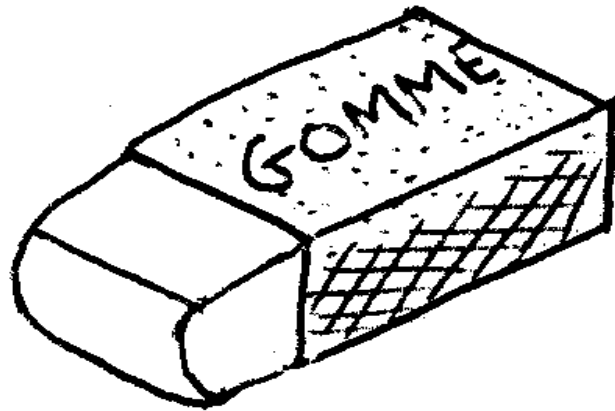


(UN) DÉ

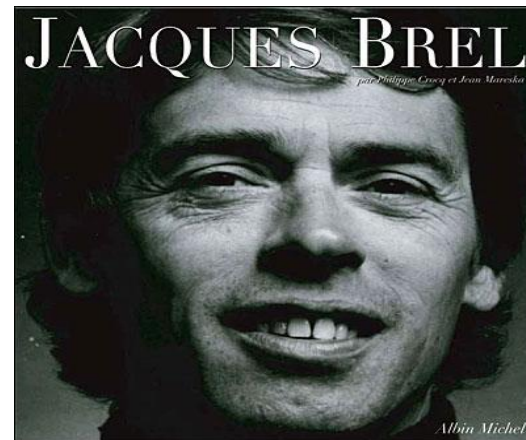




FEU (VERT)



ÎLE

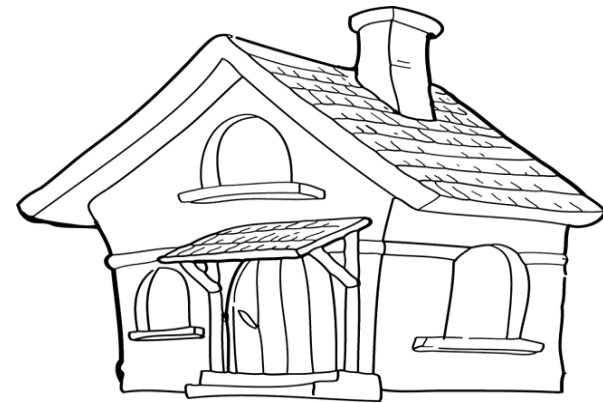




**KILOMÈTRE**



**LA LUNE**



**(MA) MAISON**



**NICOLAS**



**PÉRA**



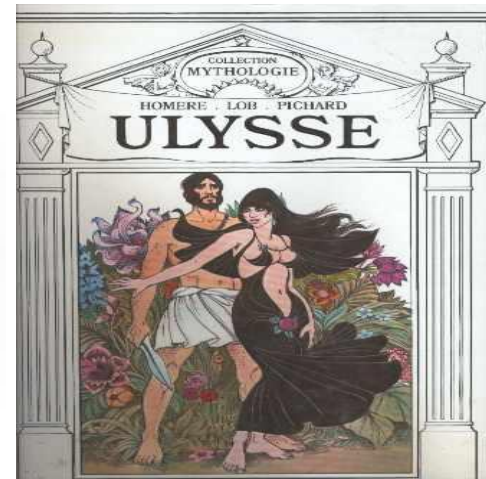
**(UNE) ROSE**



**SUR (LE LIT)**



**(UN) THÉ**







(UN) WAGON

